

elrest[®]
Wir steuern
Ihren Erfolg

visio control



System Concept

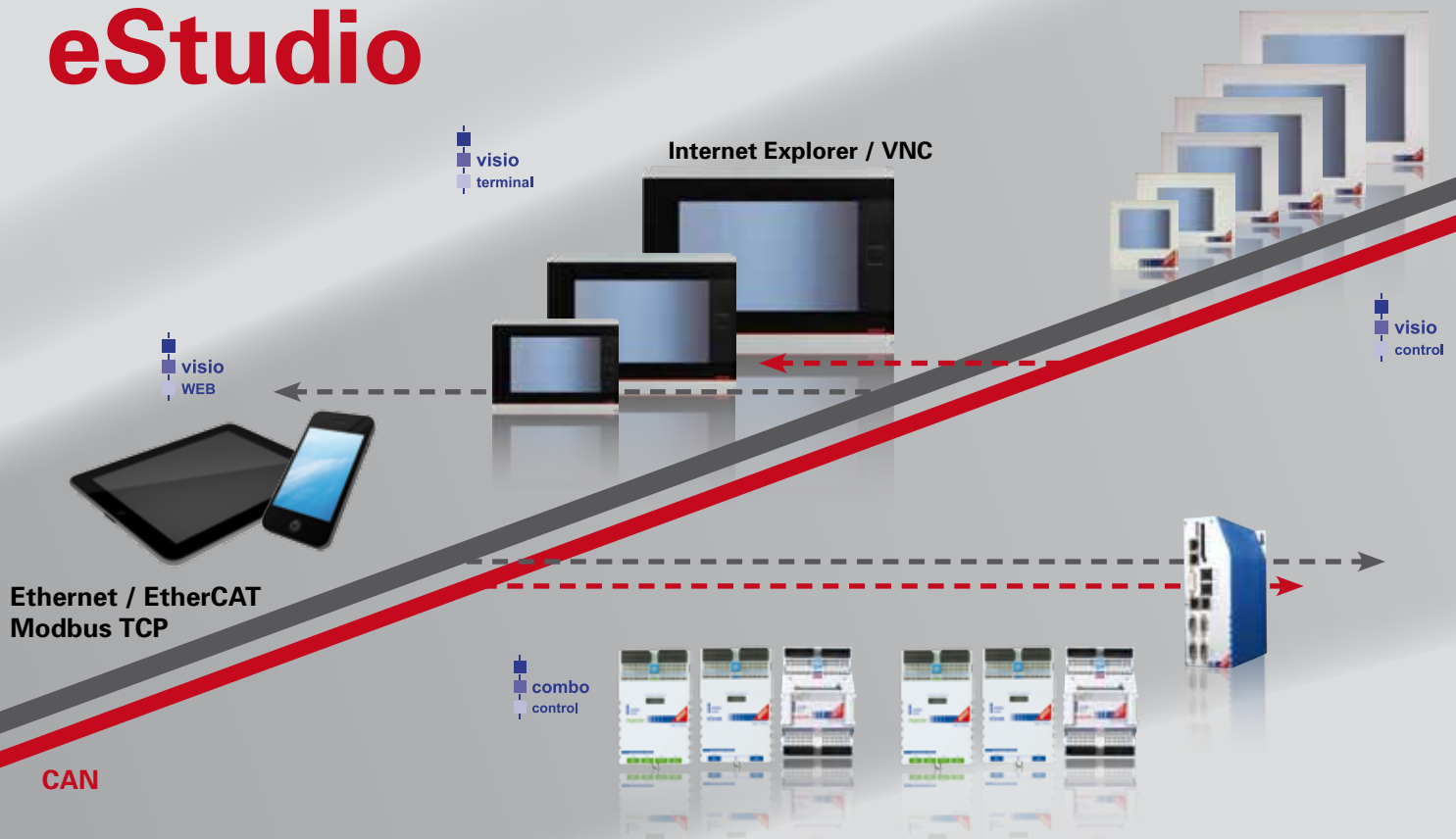
With our over 40 years of experience we provide highly flexible products for the industrial and building automation. For modern, future-oriented applications elrest offers solutions made to measure. Our products work „stand alone“ or in complex networks with each other and form a functional solution for your requirements. Whether as a drive, control, HMI, combined or in the web environment we offer the fitting solution. The planning of the masks and control is carried out via our software package eStudio or alternatively via CODESYS V2 or V3.

For your operating and management philosophy perfectly coordinated and scalable system components are available for you.

visio	visualization via WEB, VNC or Remote technology
visio control	scalable control panels with integrated PLC
combo control	scalable PLC-systems with integrated HMI-function
eStudio	comprehensive, integrated projection tool with CoDeSys integrated, for all elrest-products

By using state-of-the-art components, such as processors, FPGA's, displays, etc., cost- and energy-optimized fanless systems for versatile solutions with high performance and excellently equipped graphics are at your disposal. With the μ E, Windows CE, Windows XP, or Linux, optimal platforms for diverse software applications are available. The preferred methods of communication are Ethernet, EtherCAT, TCP-Modbus and CAN.

eStudio



Product overview

With our extensive product range powerful solutions are available for your equipment or machines.

Your process data can be easily represented or changed with the practicable display diagonals. With the integrated IEC 61131-3 CODESYS device you can realize control and regulation tasks.

The **visio** products will act as a HMI and assume the appearance and operation of your equipment. As a pure monitor, CAN or Web panel simple solutions are disposable without any extra development effort.

With our **visio control** systems we offer you full-fledged automation systems. The programming is done with the compatible CODESYS environment IEC 61131-3.

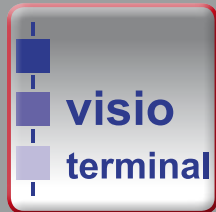
In order to implement your CI, we also offer you product variants and designs for a harmonious integration into your application environment.

visio										
	T710	T712	T715	T070	T290	PTE404*	PTE407*	PTE410*	PTE412*	PTE415*
Display	10" TFT	12" TFT	15" TFT	3,5"	5,7" CSTN	4" TFT	7" TFT	10,4" TFT	12,1" TFT	15" TFT
Resolution	640x480	800x600	1024x768	128x64	320x240	480x272	800x480	640x480	800x600	1024x768
Operating	resistive touch, OSD 5 buttons back side			15 buttons	18 buttons, resistive touch	1 button, resistive touch		resistive touch		
RAM / Flash	-	-	-	-	-	256 / 512MB	256 / 512MB	256 / 512MB	256 / 512MB	256 / 512MB
Interfaces	DVI / USB			CAN		Ethernet / USB				
Software	-	-	-	-	-	VNC Client / Browser / JVM				
Temperature	operation: 0°..50°C / storage: 0°..70°C					operation: 0°..45°C / storage: 0°..70°C				
Outside dimension (mm)	284x222x60	330x268x60	398x306x60	200x60x30	208x150x50	140x96x40	214x153x40	284x222x60	330x268x60	398x306x60
Supply voltage	24VDC 10..18 W	24VDC 10..18 W	24VDC 20..28 W	24VDC 5..8 W	24VDC 5..8 W	24VDC 8..12 W	24VDC 8..12 W	24VDC 10..18 W	24VDC 10..18 W	24VDC 20..28 W

visio control										
	P090	P303	P406	P203	P205	PMC405*	P408	P410	P412	P715
Display	3,5"	5,7" CSTN	6,5" TFT	3,5" TFT	5,7" TFT	5,7" TFT	8,4" TFT	10,4" TFT	12,1" TFT	15" TFT
Resolution	128x64	320x240	640x480	320x240	320x240/ 640x480	320x240/ 640x480	640x480	640x480	800x600	1024x768
Operating	15 buttons	18 buttons, resistive touch		resistive touch						
RAM / Flash / SRAM	2MB / 4MB / 2KB	2MB / 4MB / 2KB	64MB / 32MB / 1MB	64MB / 28MB / 1MB	64MB / 28MB / 1MB	256MB / 512MB / 1MB	64MB / 32MB / 1MB	64MB / 32MB / 1MB	64MB / 32MB / 1MB	512MB / 128MB / -
I/O expansion	-	16DI / 16DO / 8AIO	-	-	-	-	-	-	-	-
Interfaces	Ethernet / CAN / RS232 / RS485		Wie P408	Ethernet / CAN / RS485 / USB Host		Ethernet / CAN / RS232 / RS485 / USB Host				Ethernet / CAN / RS232 / USB Host
Software	µE, CoDeSys, elaDesign		WinCE, CoDeSys, elaDesign							
Temperature	operation: 0°..50°C / storage: 0°..70°C									operation: 0°..45°C storage: 0°..60°C
Outside dimension (mm)	200x60x30	208x150x50	208x150x41	96x96x25	208x150x50	208x150x50	244x188x43	398x306x60	330x268x45	398x306x77
Supply voltage	24VDC 5..8 W	24VDC 5..8 W	24VDC 8..12W	24VDC 8..12W	24VDC 8..12W	24VDC 8..12W	24VDC 10..18W	24VDC 10..18W	24VDC 10..18W	24VDC 50W

* in preparation





Visio is a HMI system, which does not need its own project planning. Hereby the projected visualization masks are filed on the control, picked up and presented by the panel via remote. An operation is possible, directly.

For the presentation we use different mechanisms. Depending on the solution, it's possible to mark information via internet explorer or via a VNC-Client. For the communication, only a TCP/IP-connection is necessary. The advantage of this solution is located in the project updating process, which only effects the control. Therefore you have more time for other topics.



These onboard operating systems are more than just a HMI or control unit. They include a PLC according to IEC 61131-3 and can take self-employed control tasks.

With this product family, powerful systems for difficult and complex automation tasks are at your disposal.



Visualization

Operator pages can be created optionally via CoDeSys or our elaDesign. In addition, you can use a browser to have access on the operator pages. You are able to create and manage your projects by eStudio.



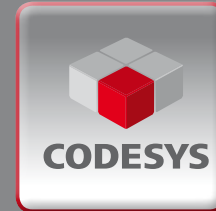
Environmentally friendly

Using the latest embedded processor, high performance with minimal power consumption is available.



Low maintenance

Higher profit to your equipment by low-maintenance, fanless and robust hardware.



IEC 61131-3 controlling

Programming is done via the CoDeSys programming environment V2 or V3. The program can be created in structured text (ST), sequential function charts (SFC), continuous function chart (CFC), ladder diagram (LD) and instruction list (IL).



Remote maintenance

A remote maintenance via router or VPN-connections is available by universal network integration. In addition, you have access to the visualization via web or VNC.



Scalable

For different applications, displays of text geared up to 19" sized 4:3 or 16:9 are available.



Customized

Support your CI with our know how in design and the variety of materials such as plastic, aluminum, glass, stainless steel.



Interfaces

For your applications a variety of interfaces are available: Ethernet, CAN, USB, serial (RS232 ports, RS-485, RS422), integrated digital and analog I/O's.



Robust solutions

Solutions in IP65 rated or with analog or digital inputs are allocated.



Performance

According to the requirements, we offer devices with appropriate processors of Cortex A8 up to Intel X86. Embedded operating systems, such as WinCE or Linux, powerful software platforms with short boot times support you.



Individual handling

By using resistive or multi-touch solutions, buttons or jog dial you can realize individual operating concepts.



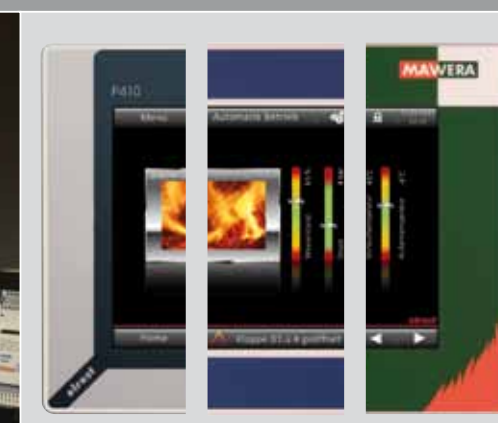
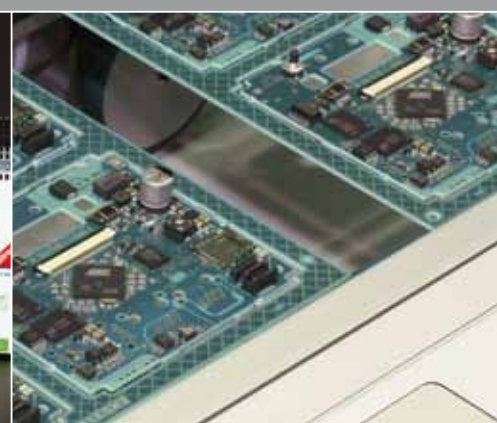
Long term available

Industrial components are used for our products. This means a future-proof investment by a long-term for you



Backup / Restore

On the systems, as well as in estudio, simple tools are provided to backup your devices or applications



Contact

.. Solutions for tomorrow

Whoever wants to survive as a manufacturer today, you have to produce your products quickly, reliably and cost-optimized with consistent quality. No easy task - unless you have the right partner.

So, if you look for someone who supports you in finding the appropriate automation system and the best solution, you are on the right track with elrest.

We hope that you could get an insight view in our company, our services as well as in our products.

Do you have any questions, wishes or suggestions?
Just get in touch with us:

elrest Automationsysteme GmbH
Leibnizstraße 10
D-73230 Kirchheim unter Teck
Germany
Phone: +49 7021 92025-0
Fax: +49 7021 92025-29
vertrieb@elrest.de



elrest – we are always there for you!

You find current information on
www.elrest.de

Illustrations and descriptions, as well as dimensions and technical specifications are in accordance with the circumstances or intentions at the time this brochure has been printed. Subject to modifications particular in the sense of technical progress, economic execution, or similar, shall remain reserved.

E607006-1.0 • 05/2013

elrest Automationsysteme GmbH
Leibnizstraße 10
D-73230 Kirchheim unter Teck
Germany
Phone: +49 7021 92025-0
Fax: +49 7021 92025-29
vertrieb@elrest.de
www.elrest.de